

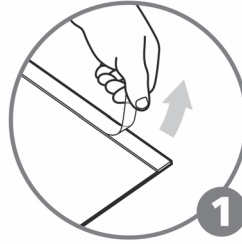
usage instructions

MAGIK FRAME™



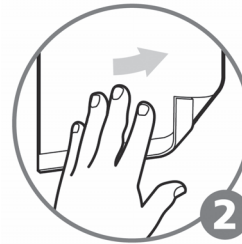
A re-usable sign holder that displays signs on any surface without leaving sticky residue behind.

- no lasting residue
- no messy tapes
- reusable/repositionable
- durable construction
- scratch resistant front



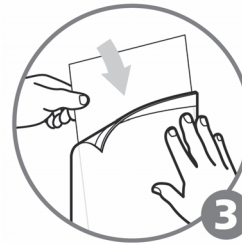
step 1

remove liner from the back of Magic Frame™ strips



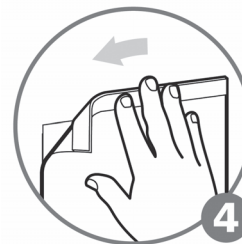
step 2

apply to any smooth surface pressing on the bottom strip first



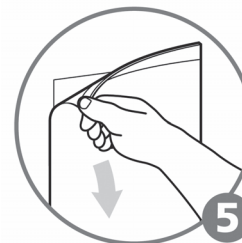
step 3

insert sign behind the frame



step 4

press down on the top strip



step 5

to remove, simply pull off